

HARDIEFLEX PREMIUM OIL S&D

Premium highly flexible hose suitable for suction and delivery of a wide range of petroleum products up to a 50% aromatic content. Black nitrile tube and cover, synthetic ply reinforcement, temp range -15 to +70°C.



I.D. (mm)	O.D. (mm)	PRESSURE (psi)	BEND RAD. (mm)	WEIGHT (kg/m)	COIL (m)	PART #	CUT
20	29	150	65	0.57	20	RH-OSH020***	✓
22	32	150	75	0.62	20	RH-OSH022***	✓
25	36	150	90	0.68	20	RH-OSH025***	✓
32	43	150	115	0.82	20	RH-OSH032***	✓
35	46	150	125	0.89	20	RH-OSH035***	✓
38	49	150	135	0.96	20	RH-OSH038***	✓
45	57	150	160	1.32	20	RH-OSH045***	✓
50	62	150	185	1.69	20	RH-OSH050***	✓
63	76	150	240	1.98	20	RH-OSH063***	✓
75	89	150	290	2.67	20	RH-OSH075***	✓

OIL SUCTION & DELIVERY

Oil hose for use with hydraulic systems as an oil return hose or various petroleum products. Black nitrile tube and cover, synthetic ply reinforcement incorporating steel helix. Suitable for petroleum products up to 50% aromatic content. Temp range -20 to +75°C



I.D. (mm)	O.D. (mm)	PRESSURE (psi)	COIL (m)	PART #	CUT
25	36	150	20	RH-OS025***	✓
32	43	150	20	RH-OS032***	✓
38	49	150	20	RH-OS038***	✓
51	63	150	20	RH-OS050***	✓

OIL DELIVERY

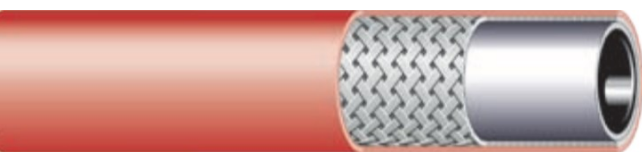
Delivery of a wide range of petroleum products up to a 50% aromatic content. Black Nitrile tube and cover, synthetic ply reinforcement, temp range -15 to +70°C.



I.D. (mm)	O.D. (mm)	PRESSURE (psi)	COIL (m)	PART #	CUT
20	29	150	20	RH-OD020***	✓
25	35	150	20	RH-OD025***	✓
32	42	150	20	RH-OD032***	✓
38	48	150	20	RH-OD038***	✓
45	55	150	20	RH-OD045***	✓
51	62	150	20	RH-OD050***	✓

HARDIE R6 MULTIPURPOSE

SAE100R6 premium multipurpose hose for use in air, water, oil and many chemical applications. Black nitrile inner tube, textile reinforcement and red neoprene cover. Temp range -29 to +95°C.



I.D. (mm)	O.D. (mm)	PRESSURE (psi)	COIL (m)	REEL (m)	PART #	CUT
6	13	400	30	150	RH-MP006MTR	✓
8	15	400	30	150	RH-MP008MTR	✓
10	17	400	30	150	RH-MP010MTR	✓
12	21	400	20	100	RH-MP012MTR	✓
16	26	300	20	100	RH-MP016MTR	✓
20	29	300	20	100	RH-MP020MTR	✓
25	36	300	20	70	RH-MP025MTR	✓

RUBBER HOSE



WATER DELIVERY

Water delivery hose suitable for medium duty water delivery requirements in general industrial and civil applications. Black SBR tube and cover, synthetic ply reinforcement.

Temperature range -40 to +85°C.



I.D. (mm)	O.D. (mm)	PRESSURE (psi)	COIL (m)	PART #	CUT
25	33	150	20	RH-WD025***	✓
32	42	150	20, 60	RH-WD032***	✓
38	48	150	20	RH-WD038***	✓
50	61	150	20	RH-WD050***	✓
63	75	150	20	RH-WD063***	✓
75	88	150	20	RH-WD075***	✓
100	114	150	20	RH-WD100***	✓

HEAVY DUTY AIR & WATER DELIVERY

Heavy Duty air & water hose suitable for civil, industrial and mining use. Black SBR tube and cover, synthetic ply reinforcement.

Temperature range -40 to +85°C.



I.D. (mm)	O.D. (mm)	PRESSURE (psi)	COIL (m)	PART #	CUT
20	29	300	20	RH-AW3020***	✓
25	36	300	20	RH-AW3025***	✓
32	44	300	20	RH-AW3032***	✓
38	50	300	20	RH-AW3038***	✓
50	63	300	20	RH-AW3050***	✓

WATER SUCTION & DELIVERY

Water suction and delivery Hose for full suction and high discharge pressures. Black SBR cover with green stripe, black SBR tube, synthetic ply reinforcement with steel helix.

Temperature range -40 to +85°C.



I.D. (mm)	O.D. (mm)	PRESSURE (psi)	COIL (m)	PART #	CUT
25	36	150	20	RH-WS025***	✓
32	43	150	20	RH-WS032***	✓
38	49	150	20	RH-WS038***	✓
50	62	150	20	RH-WS050***	✓
63	76	150	20	RH-WS063***	✓
76	89	150	20	RH-WS075***	✓
100	116	150	20	RH-WS100***	✓
125	143	150	20	RH-WS125***	✓
150	168	150	20	RH-WS150***	✓

GENERAL PURPOSE AIR & WATER

General purpose black air and water delivery hose that is suitable for many agricultural chemicals. Smooth black EPDM tube and cover, synthetic ply reinforcement, temperature range -40 to +100°C.



I.D. (mm)	O.D. (mm)	PRESSURE (psi)	REEL (m)	PART #	CUT
6	13	200	183	RH-AW006MTR	✗
10	17	200	183	RH-AW010MTR	✓
12	21	200	183	RH-AW012MTR	✓
16	25	200	183	RH-AW016MTR	✗
20	28	200	183	RH-AW020MTR	✓
25	36	200	107	RH-AW025MTR	✓

MARINE FUEL LINE

Mandrel built hose for delivery of petrol, diesel oil and biodiesel to engines on private boats up to 24m. Special composition allows smaller than standard outer diameter whilst maintaining kink and permeation resistance. Meets ISO 7840:2021 A1 and SAE J 1527:2011 USCG A1. RINA & Lloyd's Approved.



I.D. (mm)	O.D. (mm)	PRESSURE (psi)	COIL (m)	PART #	CUT
6	15	200	40	RH-MF006MTR	✓
8	16	200	40	RH-MF008MTR	✓
10	18	200	40	RH-MF010MTR	✓
12	21	145	40	RH-MF012MTR	✓
16	25	145	40	RH-MF016MTR	✓

MARINE FUEL FILLER

Mandrel built hose for delivery of petrol, diesel oil and biodiesel to tanks and engines on private boats up to 24m. Special composition allows smaller than standard outer diameter whilst maintaining kink and permeation resistance. Meets ISO 7840:2021 A1 and SAE J 1527:2011 USCG A1. RINA & Lloyd's Approved.



I.D. (mm)	O.D. (mm)	PRESSURE (psi)	B/RADIUS (mm)	COIL (m)	PART #	CUT
38	47	150	60	20	RH-FF038MTR	✓
50	62	150	75	20	RH-FF050MTR	✓



MARINE EXHAUST

Marine exhaust hose suitable also for cooling heat exchangers on pleasure boats. According to SAE J 2006:13 R2 - ISO 13363:2016 Type 2 Class B. With homologation Lloyd's Register - RINA.

Temp range -30 to +100°C.



I.D. (mm)	PRESSURE (psi)	B/RADIUS (mm)	WEIGHT (kg/m)	COIL (m)	PART #	CUT
38	45	80	0.76	20	RH-ME038***	✓
45	45	90	0.89	20	RH-ME044***	✓
50	45	100	0.99	20	RH-ME050***	✓
57	45	115	1.23	20	RH-ME057***	✓
60	45	120	1.28	20	RH-ME060***	✓
63	45	125	1.65	20	RH-ME063***	✓
75	45	150	1.97	20	RH-ME076***	✓
90	45	180	2.51	20	RH-ME088***	✓
100	45	200	2.79	20	RH-ME100***	✓
125	45	250	3.36	20	RH-ME125***	✓
150	45	300	4.70	20	RH-ME150***	✓

BULK MATERIAL HANDLING

Lightweight and flexible mandrel built hose for suction and delivery of bulk materials such as cement, chalk, lime and other abrasive powders. Black, smooth conductive rubber tube, high tensile textile plies & embedded wire helix, corrugated abrasion resistant cover. Temperature range -35 to +70°C.



I.D. (mm)	TUBE (mm)	PRESSURE (psi)	COIL (m)	PART #	CUT
76	2	45	40	RH-MH075MTR	✓
102	3	45	40	RH-MH100MTR	✓
127	3	45	40	RH-MH125MTR	✓
152	3	45	30	RH-MH150MTR	✓

RUBBER HOSE



YELLOW JACKHAMMER HOSE

Economical air & water hose. It is suitable for industrial, construction and agricultural applications. Black SBR tube and yellow cover, synthetic ply reinforcement, temp range 0 to +70°C.

Assemblies also available fitted with Type A Claw Couplings.

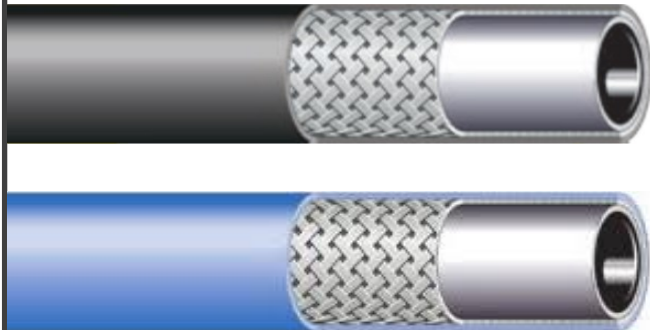


I.D. (mm)	O.D. (mm)	PRESSURE (psi)	COIL (m)	PART #	CUT
19	29	300	20	RH-YA020020	✘
19	29	300	20 Type A Fitted	RH-YA020020F	✘

PUSH LOCK HOSE

Multipurpose oil resistant hose suitable for use with air, water, mild chemicals and various petroleum products. Lightweight and flexible. Tube and cover are RMA (Class A) high oil resistant with synthetic ply reinforcement.

Temp range -40 to +100°C.



I.D. (mm)	O.D. (mm)	PRESSURE (psi)	REEL (m)	COVER COLOUR	PART #	CUT
10	16	300	91	Black	RH-PL010BK	✓
12	20	300	91	Black	RH-PL012BK	✓
20	29	300	91	Black	RH-PL020BK	✓
10	16	300	91	Blue	RH-PL010BL	✓
12	20	300	91	Blue	RH-PL012BL	✓

FRAS AIR & WATER DELIVERY HOSE

Heavy duty, fire resistant anti-static hose for use with air, water & stone dust delivery specifically in underground mining applications. Black conductive SBR/NR tube, black conductive SBR cover. Abrasion, ozone and fire resistant. Temperature range -30 to +80°C.



I.D. (mm)	O.D. (mm)	PRESSURE (psi)	COIL (m)	PART #	CUT
19	31	300	20	RH-FR020020	✘
25	37	300	20	RH-FR025020	✘
32	46	300	20	RH-FR032020	✘
38	52	300	20	RH-FR038020	✘
50	67	300	20	RH-FR050020	✘

RUBBER HOSE

BLUE FDA WASHDOWN HOSE

FDA approved hose designed for floor and equipment washdown in dairies, creameries, food processing plants and paper mills. White EPDM tube with blue cover, high tensile synthetic yarn reinforcement. Temp range -30 to +120°C. Phthalate free.



I.D. (mm)	O.D. (mm)	PRESSURE (psi)	COIL (m)	PART #	CUT
13	22	200	100	RH-HWB012MTR	✓
19	31	200	60	RH-HWB020MTR	✓
25	37	200	60	RH-HWB025MTR	✓

FOOD SUCTION & DELIVERY HOSE

Super flexible suction & delivery hose suitable for conveying liquid and fatty foods as well as alcoholic beverages and potable water. Tube compliant to FDA, Italian D.M. 21/03/73 & 3A Class II in accordance with EC 1935/2004 & EC 2023/2006.

Totally phthalate & BPA (Bisphenol A) free. Temp -30 to +110°C.



I.D. (mm)	O.D. (mm)	PRESSURE (psi)	COIL (m)	PART #	CUT
25	36	150	30.5	RH-FS025MTR	✓
32	43	150	30.5	RH-FS032MTR	✓
38	49	150	30.5	RH-FS038MTR	✓
50	63	150	30.5	RH-FS050MTR	✓
63	76	150	30.5	RH-FS063MTR	✓
75	89	150	30.5	RH-FS075MTR	✓
100	116	150	30.5	RH-FS100MTR	✓

STEEL STEAM

Black conductive EPDM inner tube, resistant to saturated steam. High tensile steel wire reinforcement. Red pin pricked EPDM cover with excellent resistance to abrasion, heat, steam, ozone and weather. 10:1 Safety factor.

Temperature range: -40 to + 210°C (intermittent to 232°C)



I.D. (mm)	O.D. (mm)	WORKING PRESSURE (psi)	BURST PRESSURE (psi)	COIL (m)	PART #	CUT
12	24	247	2465	20	RH-SH012***	✓
19	32	247	2465	20	RH-SH019***	✓
25	38	247	2465	20	RH-SH025***	✓

RUBBER PRODUCTS



NATURAL INSERTION RUBBER

Natural insertion rubber is designed for use as a general purpose strip, pad, lining or gasket and is mainly used for sealing, insulating, isolating and protecting steel or other surfaces.

It can be used in a wide range of applications including flange gaskets on pipes and tanks, insulating strip, isolation barriers, dust seals and covers and many other general purpose sealing applications.

Available in 10m rolls & various widths.

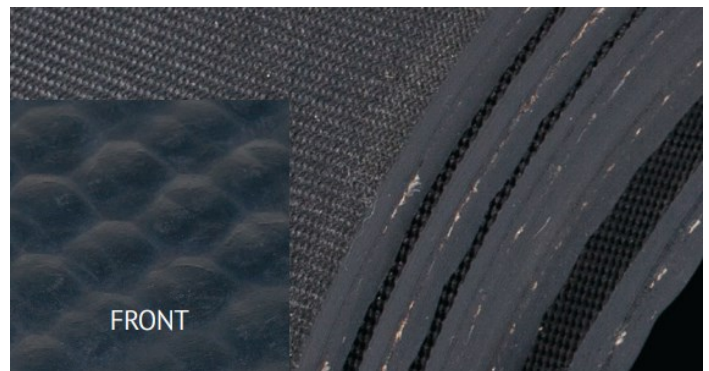


PLY	THICKNESS (mm)	1200mm WIDE 10m ROLL	CUT
1	1.5	SR-IR001-010	×
1	3.0	SR-IR003-010	×
2	4.5	SR-IR004-010	×
2	6.0	SR-IR006-010	×
2	9.0	SR-IR009-010	×

EQUINE RUBBER FLOOR MATTING

Equine rubber floor matting is a premium grade, durable and impact resistant 65 Duro synthetic rubber matting designed for use as a non-slip floor matting for horse floats, transport trucks and stables. Supplied with a turtle-back finish on the top surface for anti-slip assurance even when wet and reinforced with a heavy nylon fabric to provide superior tear resistance.

Equine rubber floor matting is also insulating and anti-fatigue, reducing the need for extra bedding in stalls and will reduce fatigue to horses in areas where they stand for long periods of time. The mat has a textured fabric finish on the underside to allow for easy bonding to floors but is also heavy enough to lay flat when simply rolled out into position.



THICKNESS (mm)	WIDTH (mm)	LENGTH (m)	PART #	CUT
8.0	2000	10	SR-EQ08200010	×